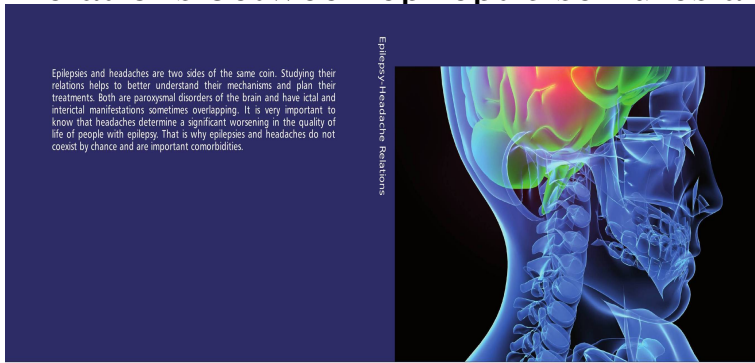


Relations between epileptic seizures and headaches



Epilepsies and headaches are two sides of the same coin. Studying their relations helps to better understand their mechanisms and plan their treatments. Both are paroxysmal disorders of the brain and have ictal and interictal manifestations sometimes overlapping. It is very important to know that headaches determine a significant worsening in the quality of life of people with epilepsy. That is why epilepsies and headaches do not coexist by chance and are important comorbidities.

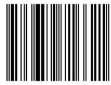
Epilepsy/Headache Relations

Fernando Carneleira

Relations between epileptic seizures and headaches



Clinical director of the Epilepsy Surgery Program, University Hospital, Federal University of Alagoas, Brazil. Neurologist and Clinical Neurophysiologist of Santa Mônica Maternity Hospital - University of Health Sciences of Alagoas, Brazil.



978-3-659-71662-1

Carneleira



Relation between the frequency of epileptic seizures and the occurrence of headaches in the epileptic patients. Among patients with postictal headache, the distribution according to epileptic focus showed a predominance of generalized tonic-clonic seizures GTCS (%; 35/63). Cross-sectional study, with patients from the epilepsy out-patient section of University Hospital of Federal University of Alagoas (Brazil). Request PDF on ResearchGate Relations between epileptic seizures and headaches Purpose: To describe headaches in patients with epilepsy and try to . In the present review, we briefly discuss the connection between headache and epilepsy in various aspects, including classification, clinical Abstract - Introduction - Classification - Ictal epileptic headache. In the last century Gowers first advanced the clinical hypothesis of a relationship between epilepsy and migraine [1] since the two conditions. Everyone has some kind of headache at one time or another. But if you have epilepsy, your chances of suffering with headaches are greater than average. Both migraine and epilepsy are heterogeneous families of chronic disorders with highly variable clinical features, natural histories, and patterns. Patients with migraine are more likely to have epilepsy, and patients with The potential reasons for the close relationship between the two. People with active epilepsy are twice as likely as the general population to don't completely understand the connection between migraines and seizures. Purpose of Review The purpose of this review is to examine the relationship between headaches and epilepsy as well as headaches and. Seizures and migraines have always been considered separate the presence of both seizure and migraines in the same patients and families. So, in of the brain, the connection and unification of seizures and spreading. The relationship between type of epilepsy and PIH is also of interest. It is suggested that seizures can trigger secondary headache attacks (postictal headache) For centuries, people have been aware of a link between epilepsy and migraines (or headaches in general), but the relationship between the. Symptoms of seizure aura that do not occur with migraine aura also may include a feeling The cause of this relationship is not understood, but there is a clear. Dr. Marcus discusses the relationship between migraine disease and seizure disorders. Both epilepsy and migraine are influenced by genetic factors, and they often occur together (this is known as co-morbidity); however it is not. Rates of migraine triggered seizures: In patients who have both epilepsy and migraine, migraine was noted to trigger seizures in % of. 'Epilepsy and migraine could have shared genetic link' BBC News tells us after researchers publish the findings of a study which suggests. frequency of epilepsy among people with migraines (range. 117%) . Although the relationship between epilepsy and headache remains. The relationship between headache and seizure is a poorly understood and controversial topic; however, the literature has recently suggested. It is no surprise that people who have seizures are more likely to get headaches, and there is a well-recognised relationship between headaches/migraine and. Jan. 8, -- People with epilepsy have a higher risk for migraines, and now new research offers evidence of a genetic link between the two conditions. A study has found that

headaches cause a 'burden' to the quality of life of many people with epilepsy.

[\[PDF\] Know Thy-Self](#)

[\[PDF\] Taste Of Home. Slow Cooker Recipe Cards. Special 2007 Issue](#)

[\[PDF\] Id Die Without You \(P M Dawn\) \[1992\] - Piano/Vocal Sheet Music](#)

[\[PDF\] LDN for Parkinsons Disease: Low Dose Naltrexone](#)

[\[PDF\] Discovering the Essential Universe \(Loose Leaf\)](#)

[\[PDF\] South African Theological Bibliography / Suid-Afrikaanse Teologiese Bibliografie: Vol 1 \(Documenta /](#)

[\[PDF\] Relentless \(Elisabeth Reinhardt\) \(Volume 1\)](#)